



See the Big Picture



ibaDeskline SAS

iba Industrial Computer

Manual

Issue 1.3

**Measurement and
Automation Systems**

Manufacturer

iba AG
Koenigswarterstr. 44
90762 Fuerth
Germany

Contacts

Main office	+49 911 97282-0
Fax	+49 911 97282-33
Support	+49 911 97282-14
Engineering	+49 911 97282-13

E-Mail: iba@iba-ag.com

Web: www.iba-ag.com

This manual must not be circulated or copied, or its contents utilized and disseminated, without our express written permission. Any breach or infringement of this provision will result in liability for damages.

©iba AG 2017, All Rights Reserved

The content of this publication has been checked for compliance with the described hardware and software. Nevertheless, deviations cannot be excluded completely so that the full compliance is not guaranteed. However, the information in this publication is updated regularly. Required corrections are contained in the following regulations or can be downloaded on the Internet.

The current version is available for download on our web site <http://www.iba-ag.com>.

Windows® is a label and registered trademark of the Microsoft Corporation. Other product and company names mentioned in this manual can be labels or registered trademarks of the corresponding owners.

Certification

The device is certified according to the European standards and directives. This device corresponds to the general safety and health requirements. Further international customary standards and directives have been observed.



Issue	Date	Revision	Chapter	Author	Version HW / FW
1.3	08/13/2017	ibaDeskline versions with SSD disk, ibaOut-State	5.5	st	

Table of contents

1	About this manual.....	5
1.1	Target group	5
1.2	Notations	5
1.3	Used symbols	6
2	Scope of delivery	7
3	Versions	8
3.1	Factory setting	8
4	Safety instructions.....	9
4.1	Designated use.....	9
4.2	Proper installation site	9
5	Description	10
5.1	Front view	10
5.2	Top view	11
5.3	Rear view	12
5.3.1	Standard system version	12
5.3.2	Version with redundant power supply.....	14
5.4	Internal view	15
5.5	Error monitoring	17
5.5.1	ibaOut-Temp	18
5.5.2	ibaOut-State	19
6	Installation, connection and first switching on	20
6.1	Safety instructions	20
6.2	Setting up	20
6.3	Connection and first switching on	21
7	Installation of measuring or additional boards	22
7.1	Safety instructions and notes	22
7.2	Basic procedure.....	22
7.3	Opening the device.....	23
7.4	Installing special graphic card.....	23
8	Maintenance work.....	25
8.1	Basic procedure.....	25
8.2	Power supply slide-in module for replacement of redundant power supply unit.....	25
8.3	Restoring of a RAID system during operation	26
9	Installing operating system and iba software	31
9.1	Installation	31

9.2	Installing Windows Embedded Standard 7 or Windows Server 2008 with the Recovery DVD	31
9.2.1	General	31
9.2.2	Select the language	32
9.2.3	Enter the product key	32
9.2.4	Partitioning	33
9.2.5	Completing installation	37
9.3	Windows Updates	38
9.4	Antivirus Software	38
9.5	Installing iba software	38
10	Device dimensions	39
11	Technical data	40
11.1	Main data	40
11.2	Electronic components and interfaces	41
11.3	Products	42
12	Support and contact	43

1 About this manual

This manual describes the construction, the use and the operation of the industrial PC ibaDeskline SAS.

1.1 Target group

This manual addresses in particular the qualified professionals who are familiar with handling electrical and electronic modules as well as communication and measurement technology. A person is regarded to as professional if he/she is capable of assessing safety and recognizing possible consequences and risks on the basis of his/her specialist training, knowledge and experience and knowledge of the standard regulations.

1.2 Notations

The following designations are used in this manual:

Action	Notations
Menu command	Menu <i>Logic diagram</i>
Call of menu command	<i>Step 1 – Step 2 – Step 3 – Step x</i> Example: Select menu <i>Logic diagram – Add – New logic diagram</i>
Keys	<Key name> Example: <Alt>; <F1>
Press keys simultaneously	<Key name> + <Key name> Example: <Alt> + <Ctrl>
Buttons	<Button name> Example: <OK>; <Cancel>
File names, Paths	„File name“, „Path“ Example: „Test.doc“

1.3 Used symbols

If safety instructions or other notes are used in this manual, they mean:

DANGER

The non-observance of this safety information may result in an imminent risk of death or severe injury:

- By an electric shock!
 - Due to the improper handling of software products which are coupled to input and output procedures with control function!
-

WARNING

The non-observance of this safety information may result in a potential risk of death or severe injury!

CAUTION

The non-observance of this safety information may result in a potential risk of injury or material damage!



Note

A note specifies special requirements or actions to be observed.



Important note

Note if some special features must be observed, for example exceptions from the rule.



Tip

Tip or example as a helpful note or insider tip to make the work a little bit easier.



Other documentation

Reference to additional documentation or further reading.

2 Scope of delivery

After unpacking check the completeness and intactness of the delivery.

The scope of delivery includes:

- ☐ Industrial Computer ibaDeskline SAS
- ☐ USB keyboard with PS2 adapter (PS2 + USB)
- ☐ Mouse (USB/PS2), optical
- ☐ Mains cable
- ☐ Documentation
- ☐ For installed special graphic card there is an additional DVI/VGA adapter cable
- ☐ ibaSoftware license key (when a software was ordered)

The documentation contains:

- ☐ Manual
- ☐ Subcontractors' documentation
- ☐ Software (Operating system Windows Embedded Standard 7 or Windows Server 2008/2012 (R2))
- ☐ Recovery DVD (for the ordered Windows version and all associated operating system parameters)
- ☐ ibaSoftware, optional order
- ☐ Hardware driver (motherboard, VGA card)
- ☐ 1 ibaSoftware license key (dongle), optional with ibaSoftware product
- ☐ Serial number (iba-S/N)

3 Versions

- ☐ ibaDeskline SAS (Xeon E3, Win7 64 Bit, PCIe) with one hard disk, can be upgraded with up to 7 further hard disks
- ☐ ibaDeskline SAS PCI (Core2Quad 9400, Win7 64 Bit, PCI) with one hard disk, can be upgraded with up to 7 further hard disks

Enhancement options:

- ☐ RAID 1 system with 2 hard disks, 1 redundant power supply unit
Data are mirrored.
- ☐ RAID 6 system with 8 hard disks, 1 redundant power supply unit
The net volume corresponds to the volume of approx. 6 hard disks with simultaneous high performance and system stability against failure.
- ☐ Server system with Windows Server 2008/2012 (R2)
- ☐ ibaDeskline with Windows 10 (on request)
- ☐ ibaDeskline with SSD disk (on request)
- ☐ SSD (for upgrade)
- ☐ Upgrade to RAID1 system for ibaDeskline with SSD

3.1 Factory setting

In delivery state, 2 users with or without password are configured:

User	Password
pda	-
Administrator	xadmin



Important note

Change the preconfigured passwords after starting-up the PC. This way, unauthorized usage will be impeded.

4 Safety instructions

4.1 Designated use

The device may be used only for the following applications:

- ☐ Machine test and commissioning of industrial systems
- ☐ Measurement data logging and analysis
- ☐ Applications of ibaSoftware products (ibaPDA, ibaLogic etc.)

4.2 Proper installation site

According to manufacturer's specifications the device can only be installed on an even non-slip installation surface, for example table or rack.

DANGER

Electric Shock!

Before opening the device disconnect it from the mains and pull out the mains plug from the socket equipped with earthing contact!

Never use the device with a damaged mains cable!

WARNING

Before opening the device disconnect it from the mains by unplugging the cable from the socket equipped with an earthing contact and wait for several minutes until the components have cooled down! Thus you will avoid injuries due to the electric shock or burns!

Connect the device to one supply voltage only according to specifications on the built-in power supply unit!

Always use a socket equipped with earthing contact! Use a terminal strip with overvoltage protection or an uninterruptible power supply (UPS)!

Always connect the device to earthed power networks (TN-networks according to VDE 0100 Part 300 and IEC 60364-3)! The operation via ungrounded networks or networks (IT networks) earthed via impedance is not permitted!

In case of faults, a defective device or a possible defect pull out the mains plug from the socket equipped with earthing contact!

Never put a damaged device into operation!

Pay attention to sharp edges in the housing!

Never switch off the device by means of the mains switch without previous shutdown of the device.



Electrostatic discharge!

Touch the components only in electrostatically discharged state!

5 Description

5.1 Front view

ibaDeskline / ibaDeskline PCI



- 1 Optical drive with integrated writing function
- 2 Plug-in slots for hard disks

5.2 Top view



ibaDeskline

- | | |
|---|----------------------|
| 1 | USB 2.0 interfaces |
| 2 | USB 3.0 interfaces |
| 3 | Headset interface |
| 4 | Microphone interface |
| 5 | Power button |
| 6 | Reset button |

ibaDeskline PCI

- | | |
|-------|----------------------|
| 1 + 2 | USB 2.0 interfaces |
| 3 | Headset interface |
| 4 | Microphone interface |
| 5 | Power button |
| 6 | Reset button |

5.3 Rear view

5.3.1 Standard system version

ibaDeskline



- 1 Connections for external devices (keyboard, mouse, network etc.)
- 2 Slots X21 to X26 (for low-profile iBA cards)
- 3 Slot X2 for hard disk controller
- 4 Slots X3 to X7 (PCIe)
- 5 Power supply with switch and panel plug for non-heating appliances

ibaDeskline PCI

- 1 Connections for external devices (keyboard, mouse, network etc.)
- 2 Slots X21 to X26 (for low-profile iba cards)
- 3 Slot X1 for hard disk controller
- 4 Slots X2, X4 to X7 (PCI), whereas X3 (PCIe) for special graphic card
- 5 Power supply with switch and panel plug for non-heating appliances

5.3.2 Version with redundant power supply

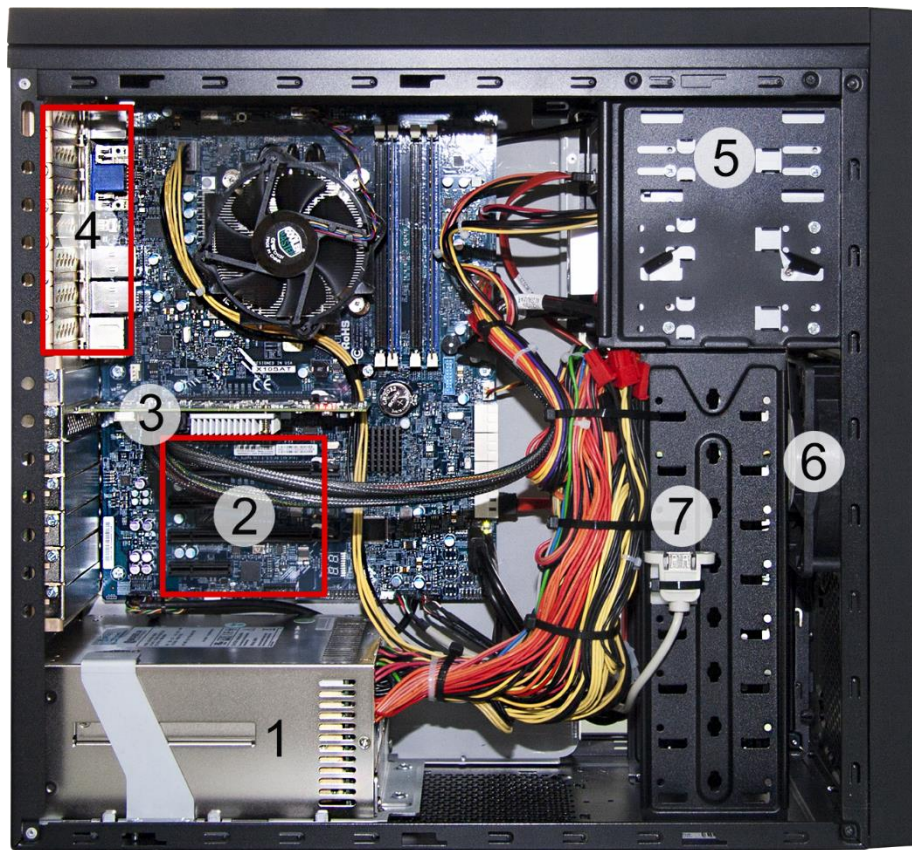
RAID systems are equipped with a redundant power supply unit. ibaDeskline is shown as example below.



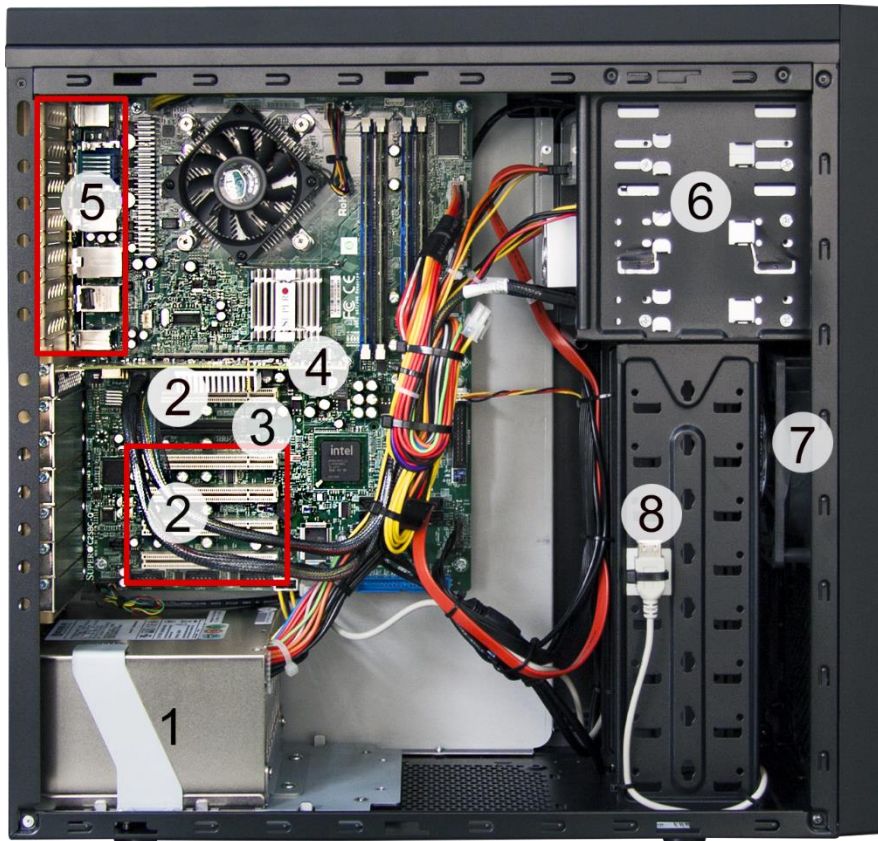
- 1 Connections for external devices (keyboard, mouse, network etc.)
- 2 Slots X21 to X26 (for low-profile iba cards, e. g. output connections of FOB-4i cards)
- 3 Slot X2 for hard disk controller
- 4 Slots X3 to X7 (PCIe)
- 5 2x Power supply with switch and panel plug for non-heating appliances, replaceable

5.4 Internal view

ibaDeskline



- 1 Power supply unit (redundant for RAID systems)
- 2 PCIe slots
- 3 Hard disk controller
- 4 Slots for low-profile iba cards
- 5 Drive bracket
- 6 Fan (Ø 12 cm)
- 7 Internal USB port (dongle)

ibaDeskline PCI

- 1 Power supply unit (redundant for RAID systems)
- 2 PCI slots
- 3 Special graphic card, optional
- 4 Hard disk controller
- 5 Slots for low-profile iba cards
- 6 Drive bracket
- 7 Fan (Ø 12 cm)
- 8 Internal USB port (dongle)

5.5 Error monitoring



The temperature and the status of the power supply unit can be monitored with the slot cards ibaOut-Temp and ibaOut-State. The cards can be ordered separately as accessory. If the card is ordered with ibaDeskline, it is installed by default in slot X21.



Note

The subsequent installation of a card is carried out according to the installation in an ibaRackline computer. Please refer to the ibaRackline manual.

The status of temperature and power supply unit are indicated each with a bicolored LED.

LED	Status	Description
TEMP	green	Temperature OK
	red	Overtemperature
POWER	green	Power supply OK
	red	Power supply error Redundant power supply: error in one of the two power supply units

5.5.1 ibaOut-Temp

ibaOut-Temp provides two relay outputs for temperature and power supply (2-pin connector), which can be used to indicate errors. Both error types are indicated separately.

The switch position of the outputs is as follows:

Status	Switch POWER	Switch TEMP
Power off or power error	closed	open
Power OK, temperature OK	open	open
Power OK, overtemperature	open	closed

Contact loading capacity

Nominal current: 400 mA

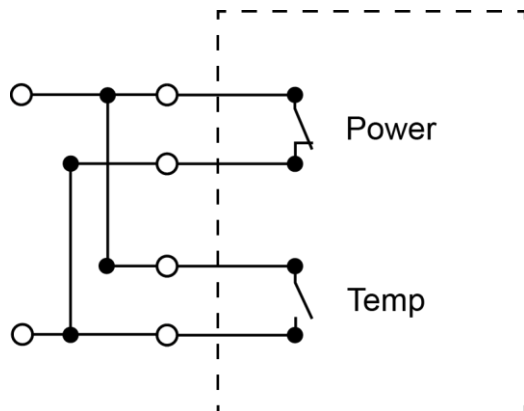
Nominal voltage: 60 V

Compatibility to previous models

ibaDeskline computers of older type series provide only one relay output for error indication. The relay contact is closed when an error occurs, without differentiating between overtemperature or a power supply error.

ibaOut-Temp can be used in the same way, when both outputs are connected to one output (parallel circuit).

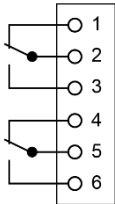
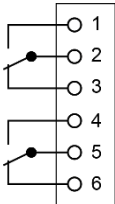
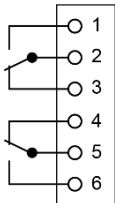
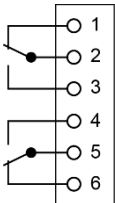
Wiring diagram of the parallel circuit:



5.5.2 ibaOut-State

ibaOut-State provides an output (6-pin connector) which can be used to indicate errors. Both error types are indicated separately.

These are the switch positions:

Switch	state	switch	state
	Power OK, temperature OK		Power off or Power error and overtemperature
	Power error, temperature OK		Power OK, overtemperature

Contact loading capacity

Nominal current: 300 mA

Nominal voltage: 220 V DC

Compatibility to previous ibaRackline models

The behavior of ibaOut-State is identical with the previous models with a relay output, if pin 5 and 6 are used. The relay contact of the previous ibaRackline models is closed when an error occurs, without differentiating between overtemperature or a power supply error.

6 Installation, connection and first switching on

6.1 Safety instructions



Electric Shock!

Never use the device with a damaged mains cable!



Connect the device to one supply voltage only according to specifications on the built-in power supply unit!

Always use a socket equipped with earthing contact! Use a terminal strip with overvoltage protection or an uninterruptible power supply (UPS)!

Connect the device only to earthed power networks (TN-networks according to VDE 0100 Part 300 or IEC 60364-3)!

The operation via ungrounded networks or networks (IT networks) earthed via impedance is not permitted!

Never put a damaged device into operation!

6.2 Setting up

Place the device only in the location which has the following properties:

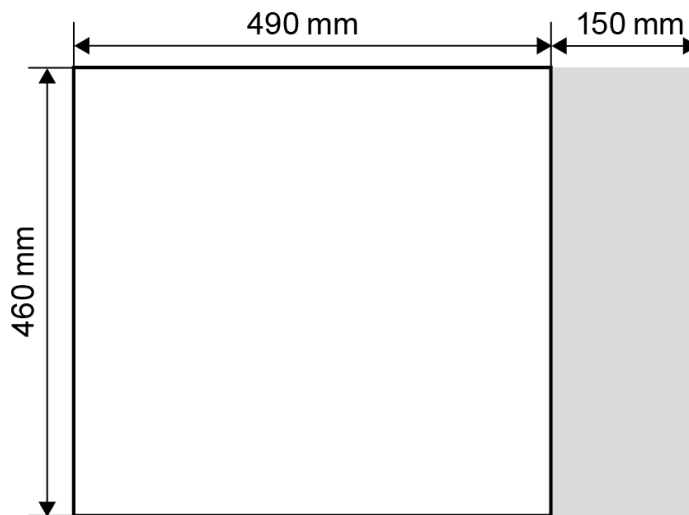
- Stationary
- Shock-free
- In the protected room, for example switch cabinet
- Dust-free and dry environment
- Even and non-slip base



Note

If you embed the device, observe the minimum bending radii of the cables and lines. The mounting clearance must be at least 150 mm from the rear wall.

Ensure sufficient air circulation.



6.3 Connection and first switching on



Note

Before switching on the device for the first time check if the power supply is connected properly and the connecting cable (fiber optic and copper data cable) are plugged. The device is delivered in a pre-installed and configured state. You can find the parameters of the operating system and ibaSoftware in the corresponding manuals or in the Online Help.

1. Connect the device to a mains socket using the mains cable.
2. Connect all cables.
3. Switch on the device using the mains switch.
4. Boot the device. Press the Power button.
The computer is booted automatically with Windows.
5. Finally, start all ibaSoftware applications.

7 Installation of measuring or additional boards

7.1 Safety instructions and notes



Electric Shock!

Before opening shut down the device! After that disconnect it from the mains and pull out the mains plug from the socket equipped with earthing contact!



Wait for several minutes after switching off until the components have cooled down! Thus you will avoid injuries due to the electric shock or burns!

Pay attention to sharp edges in the housing!



Electrostatic discharge!

Touch the components only in electrostatically discharged state!



Note

If you upgrade the device, observe the instructions in the subcontractors' documentation.

Back up all data on an external storage medium.

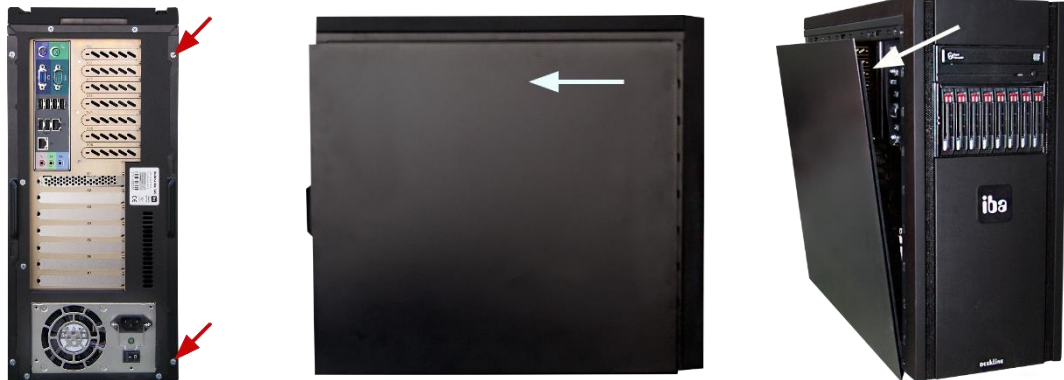
7.2 Basic procedure

If you carry out any work at the device, always proceed in the following way:

1. Remove all mobile data carriers (DVD, memory cards and so on).
2. Shut down the device.
3. Switch off the device.
4. Unplug the mains cable from the socket.
5. Remove the side panel (If you want to exchange cards, remove the left side panel).
6. Carry out upgrade operations.
7. Attach the side panel again.
8. Put the device into operation again.

7.3 Opening the device

1. At the rear side, loosen the two screws fixing the side panel.
2. Push the side panel slightly backwards.
3. Tilt the side panel and pull it upwards.



7.4 Installing special graphic card

The ibaDeskline computers provide the following graphics connections ex factory:

ibaDeskline	ibaDeskline PCI
1x analog (VGA)	1x analog (VGA)
2x digital (DVI, HDMI)	



Note

If you want to use an additional monitor with ibaDeskline PCI, it is necessary to install an additional special graphic card. The graphic card has the iba order No. 43.900.511. The DVI/VGA adapter cable is included into the graphic card scope of delivery. For installation observe the instructions of the graphic card manufacturer. For the special graphic card there is a slot with PCI Express x4-plug reserved (slot 3).



**Note**

iba recommends you to use a graphic card with a bus interface PCI Express x1. The slot supports only this interface version.

Special graphic card

Chip set:	NVIDIA Quadro
nView Enabled:	Yes
Bus Interface:	PCI Express x1
Max Displays/Board:	2
Power:	21 W
Monitor port:	DMS-59

DVI adapter cable**VGA adapter**

8 Maintenance work

8.1 Basic procedure

If you carry out any maintenance work at the device, always proceed in the following way:

1. Remove all mobile data carriers (DVD, memory cards and so on).
2. Shut down the device.
3. Switch off the device.
4. Unplug the mains cable from the socket.
5. Remove the left or, if necessary, both side panels.
6. Carry out the maintenance work.
7. Attach the side panels again.
8. Put the device into operation again.

8.2 Power supply slide-in module for replacement of redundant power supply unit

If the green lamp of a connected power supply unit is not lit any more during operation or you can hear a loud beep, the power supply unit must be replaced.

DANGER

Electric Shock!

Only qualified professionals are allowed to replace a power supply unit during operation!



Electrostatic discharge!

Touch the components only in electrostatically discharged state!



1 Fastening screw of slide-in module

1. Loosen the fastening screw which is used to secure the power supply slide-in module at the rack.
2. Pull out the power supply slide-in module.
3. Replace the power supply slide-in module with the module of the same type (available at iba).

8.3 Restoring of a RAID system during operation

DANGER

Only qualified professionals are allowed to replace a hard disk unit during operation!



Electrostatic discharge!

Touch the components only in electrostatically discharged state!



Important Note

The RAID system is not automatically restored after having changed the hard disk. Use the program "Adaptec Storage Manager".



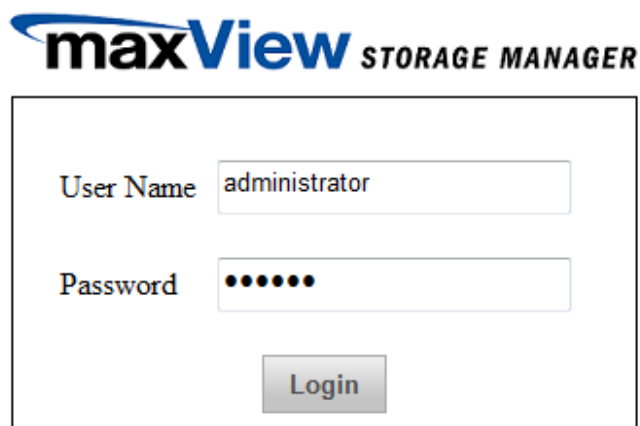
Note

The DVD "Adaptec Storage Manager" is included in the documentation.

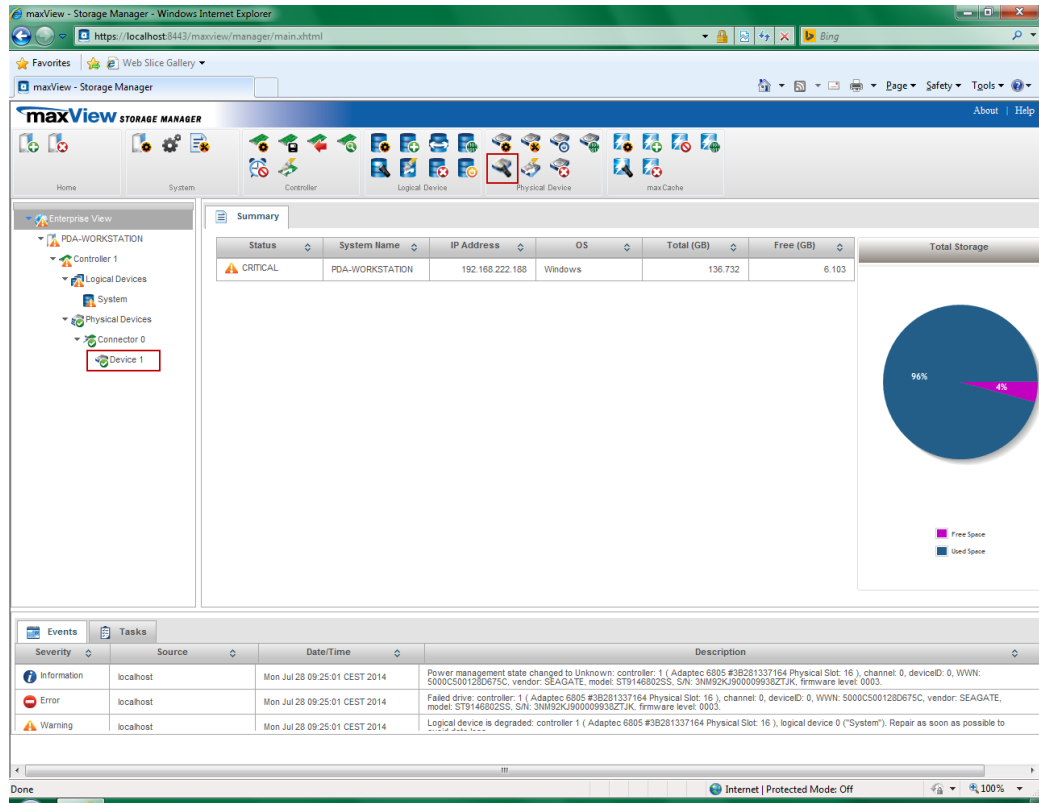
If the program "Adaptec Storage Manager" is not yet installed on the device, install it before carrying out the restoration.


If the buzzer sound can be heard at the same time, it is possible that a hard disk in the RAID system is defective. To restore the RAID system, proceed as follows:

1. Start the program " maxView Storage Manager ". The "Log in" window is displayed.



2. Log in as follows:
User Name: administrator
Password: xadmin
3. A click on <Login> opens the program window of the manager.
The defective hard disk is not indicated.



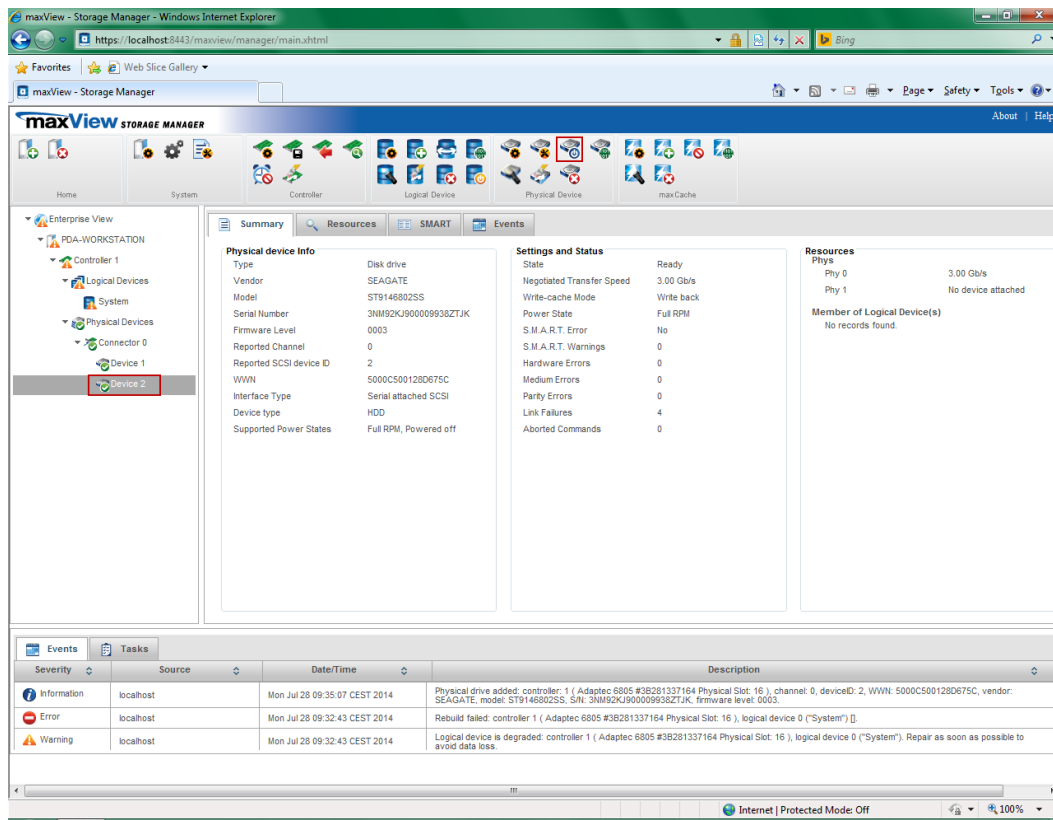
4. Mark the hard disk, which is available ("Device 1" in the example above) and click on the „Locate“ icon  in the "Physical device" section. The available hard disk blinks in the drive frame.
5. Replace the defective hard disk.





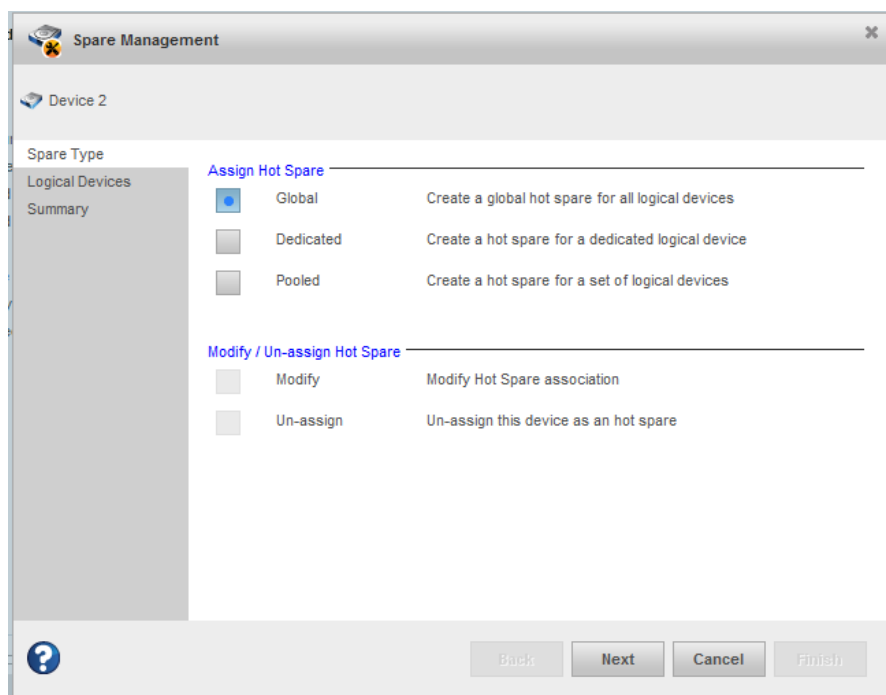
Note

The removal and installation is described in the documentation of the hard disk manufacturer.

6. The new hard disk is indicated in the „maxView Storage Manager“. But the hard disk has not been registered in the system.

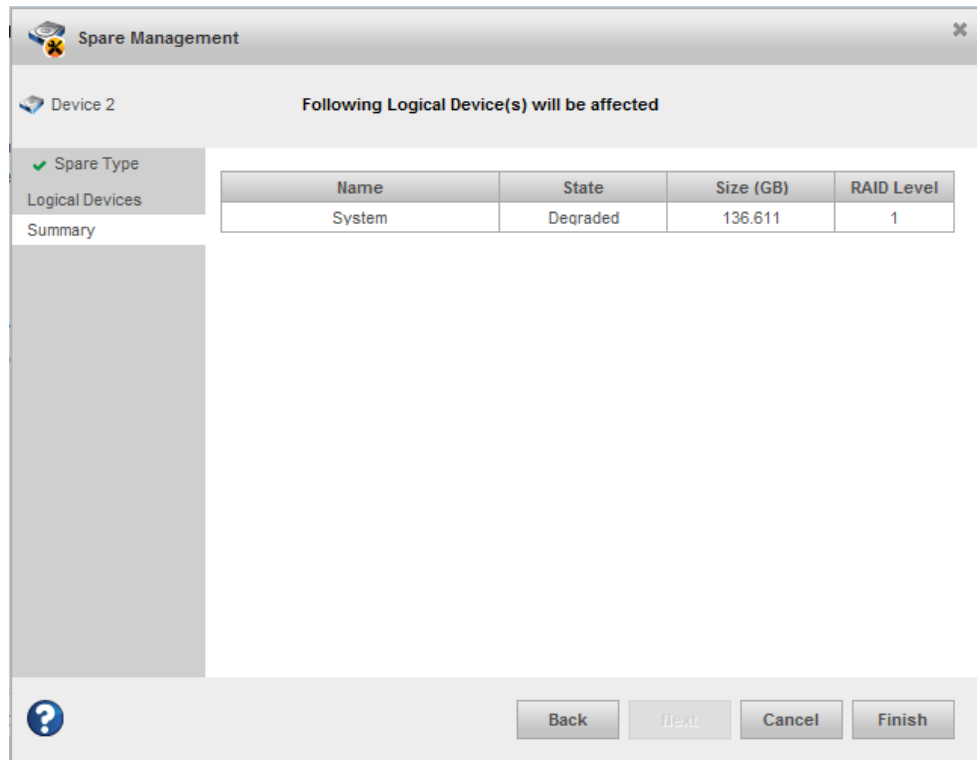


7. Mark the new hard disk („Device 2“ in the example above) and click on the „Initialize“ icon  in the „Physical Device“ section.
8. Then, click on the „Spare Management“ icon  in the „Physical Device“ section.

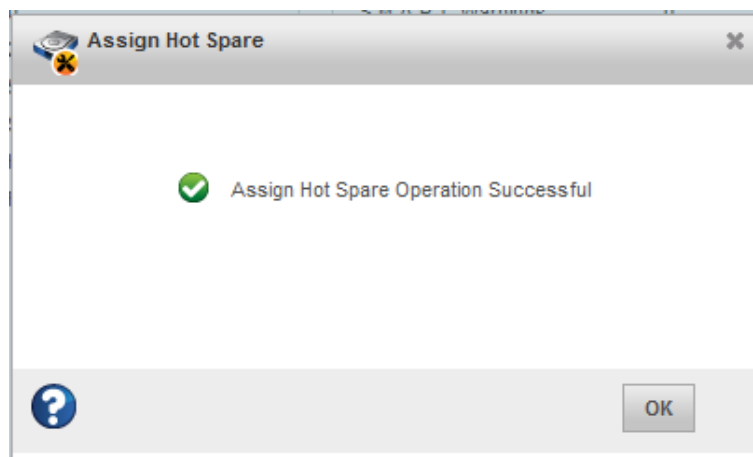


9. Select the option “Global” and click on the <Next> button.

10. Confirm the following overview with <Finish>.



11. The following message appears when the operation was successful.



Otherwise an error message appears.

12. The progress of the rebuild process is displayed under “Tasks”.

The screenshot shows the maxView Storage Manager web interface. The 'Tasks' tab is selected in the left sidebar. The main content area displays a table of tasks. Task 101 is highlighted, showing a rebuild process for logical device 0. The 'Progress' column for Task 101 shows 2%.

Task ID	System	Description	State	Start Time	Recurring	Priority	Progress
101	localhost	Build logical device: controller 1, logical device 0	Running	Mon Jul 28 09:36:45 CEST 2014	Never	High	2 %
1	192.168.222.188	Test all spare disks for errors	Scheduled	Thu Aug 28 08:26:50 CEST 2014	Monthly	Low	

13. As soon as the hard disk has been successfully registered in the system, the program can be closed.

The screenshot shows the maxView Storage Manager web interface. The 'Summary' tab is selected in the left sidebar. The main content area displays a summary of the system, including a table of system information and a pie chart showing 100% free space.

Status	System Name	IP Address	OS	Total (GB)	Free (GB)	Total Storage
NORMAL	PDA-WORKSTATION	192.168.222.188	Windows	273.465	1.22	

The pie chart shows 100% Free Space.

Severity	Source	Date/Time	Description
Information	192.168.222.188	Mon Jul 28 09:21:49 CEST 2014	Established a connection to PDA-WORKSTATION on port number 34,571.
Information	localhost	Mon Jul 28 08:53:15 CEST 2014	maxView Storage Manager started on TCP/IP port number 34,571.

9 Installing operating system and iba software

9.1 Installation

For the installation of the operating system and the ibaSoftware there are 2 possible ways:

- ☐ Install the Windows operating system and the required device drivers (graphic card, hard disk controller etc.).
- ☐ Install the operating system using the Recovery DVD.
Compared to the common installation of the operating system the method named above is advantageous because all required settings and configurations of the device hardware (e.g. drivers) have already been performed on the Recovery DVD. The delivery includes the Recovery DVD for the operating system stated in your order.



Note

If you install the operating system with the Recovery DVD, all settings and configurations of the device hardware (e.g. drivers) will be installed.

Do not change the basic configuration of the device components (e.g. motherboard)!

If you modify the device components, it can make installation with the Recovery DVD impossible.

9.2 Installing Windows Embedded Standard 7 or Windows Server 2008 with the Recovery DVD



Important note

The Windows Embedded Standard 7 license is bound to the computer the iba software is installed on. The license must not be used on another computer.

9.2.1 General

- ☐ If you install the operating system from the Recovery DVD, the computer must be started from the DVD. Make sure, that the required settings in the BIOS are correct. When „PRESS ANY KEY TO BOOT FROM DVD“ appears on the screen, press any key.
- ☐ The recovery procedure is only available in English.
- ☐ The setup routine of Microsoft is used.
- ☐ When the recovery procedure is finished, update your Windows version to have the latest safety related version.
- ☐ 6 pre-installed languages can be chosen as system language: English, French, German, Italian, Spanish, Russian (additional languages optionally).

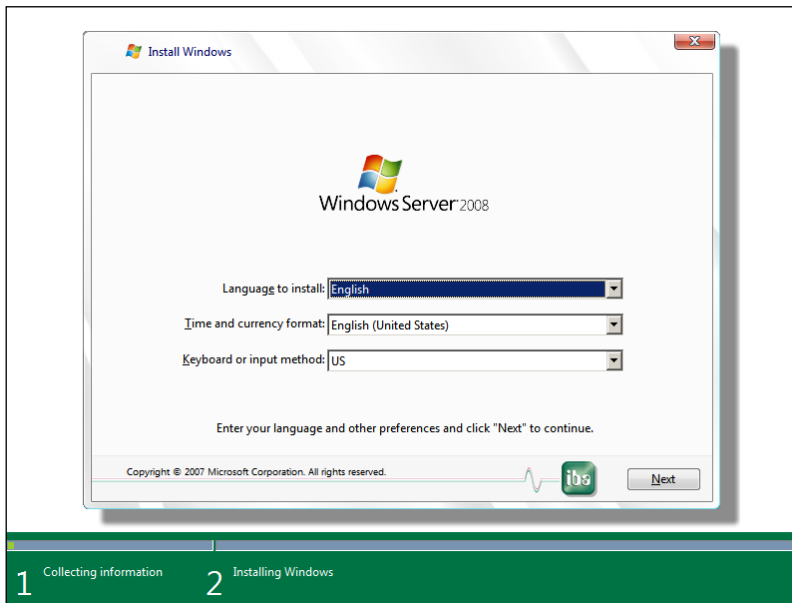
**Note**

No liability is assumed for the loss of data due to incorrect handling. Always make sure, that you select the correct drives and partitions.

**Note**

The recovery process takes approx. 10 minutes. It is possible that only a black or green screen is visible during the process.

9.2.2 Select the language



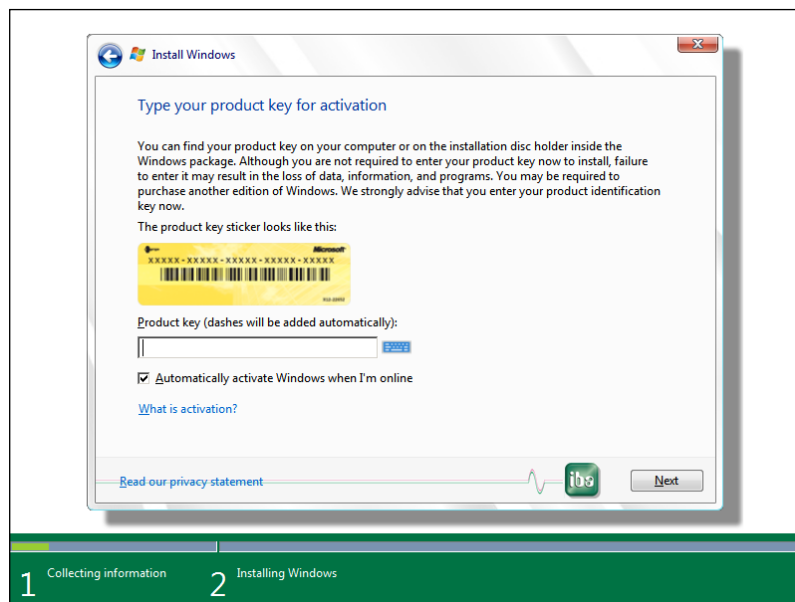
When the installation has started, you can select the system language to be installed. When using Windows Embedded Standard 7 or Windows Server 2008 the language can be changed subsequently.

9.2.3 Enter the product key

(only with Windows Server 2008/2012 (R2))

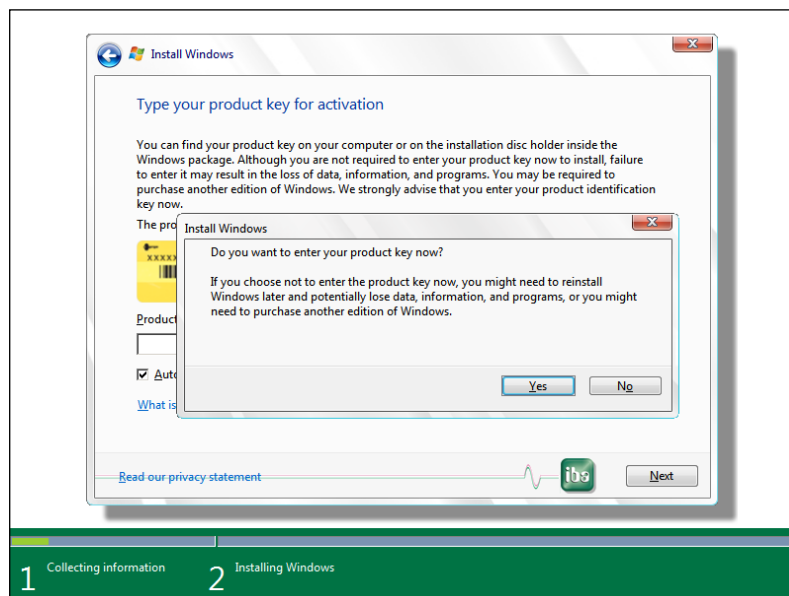
**Note**

When Windows Embedded Standard 7 is used, entering the product key or activating the Windows license is not required.



Here you can enter optionally the product key. The product key can be changed subsequently.

If you do not enter the product key, you will be asked to confirm.



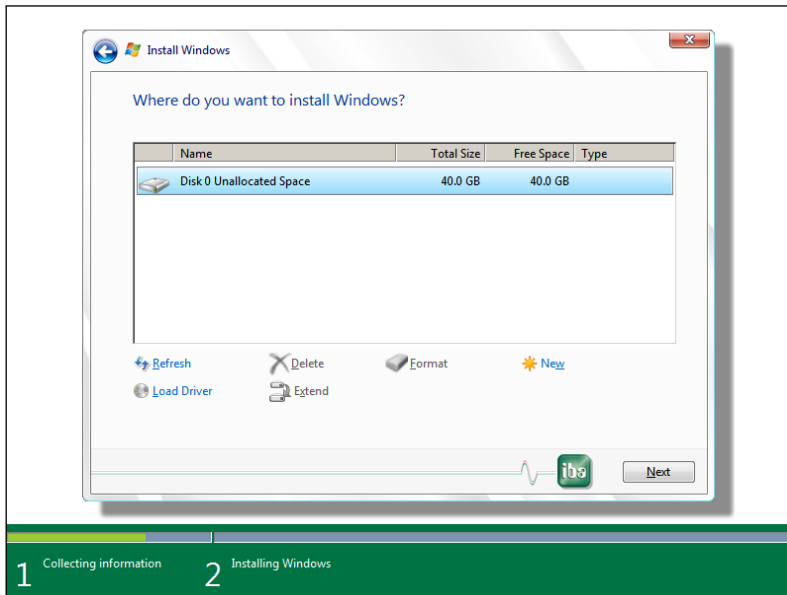
Confirm with <No>.

9.2.4 Partitioning

There are several possibilities to set up partitions:

- ☐ Set up a new drive completely as system drive
- ☐ Set up partitions on a new drive
- ☐ Install an operating system on a drive already used (Windows Embedded Standard 7 or Windows Server 2008)
- ☐ Substitute the operating system on a drive already used (substitute Windows Embedded Standard 7 with Windows Server 2008 or vice versa)

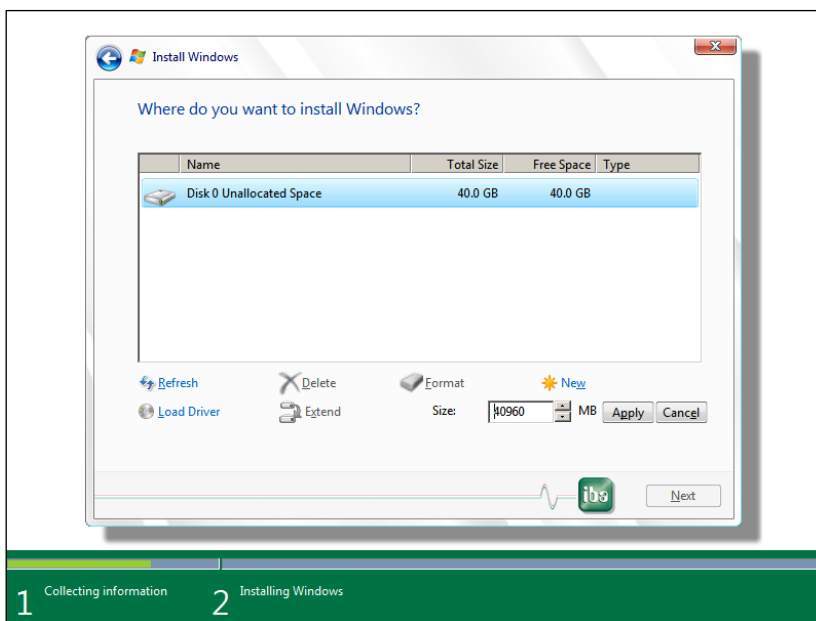
Possibility 1: New drive



You use a new drive and want to use it completely as system drive.

Click <Next> and continue with chapter 9.2.5 „Completing installation“.

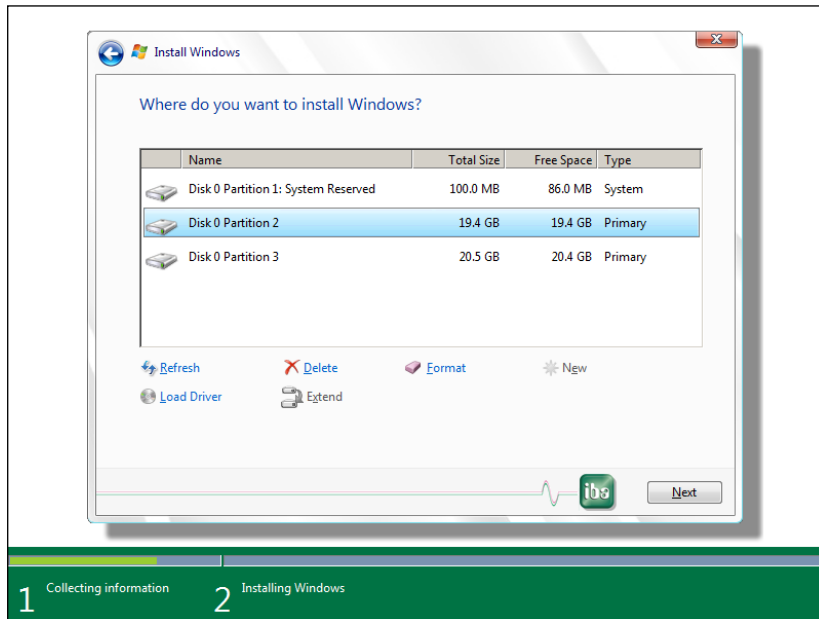
Possibility 2: Partitioning the new drive



You use a new drive and want to set up partitions.

1. Click <Drive Options (advanced)>
2. Click <New>
3. Enter the partition size
4. Confirm with <Apply>
5. Mark the partition, where the operating system should be installed
6. Click <Next> and continue with chapter 9.2.5 „Completing installation“.

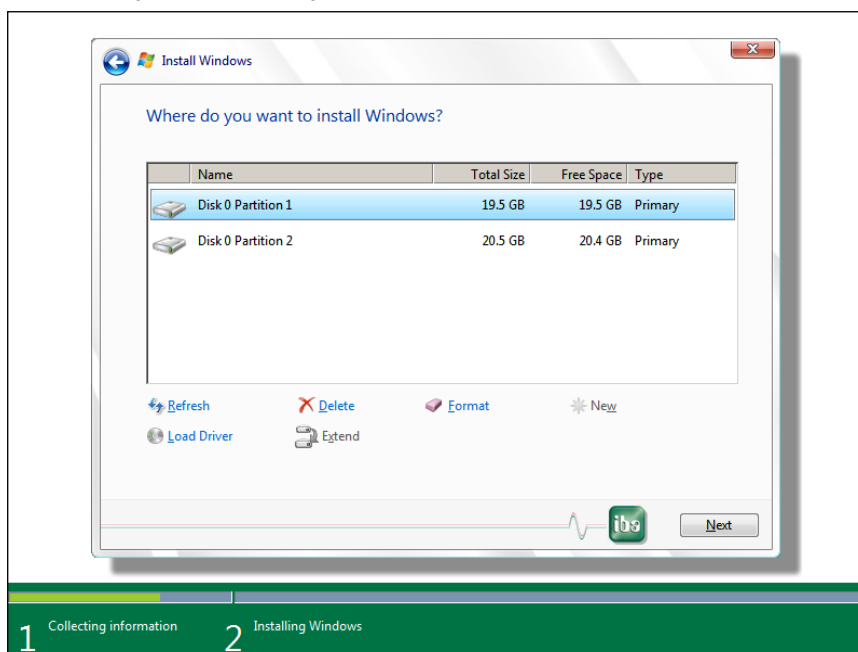
Possibility 3: Recovery Windows Embedded Standard 7



The drive is already in use and you want to install the operating system.

1. Click <Drive Options (advanced)>
2. Mark the system partition
3. Click <Format>
4. Confirm with <OK>
5. Mark the primary partition (normally the smaller one)
6. Click <Format>
7. Confirm with <OK>
8. Click <Next> and continue with chapter 9.2.5 „Completing installation“.

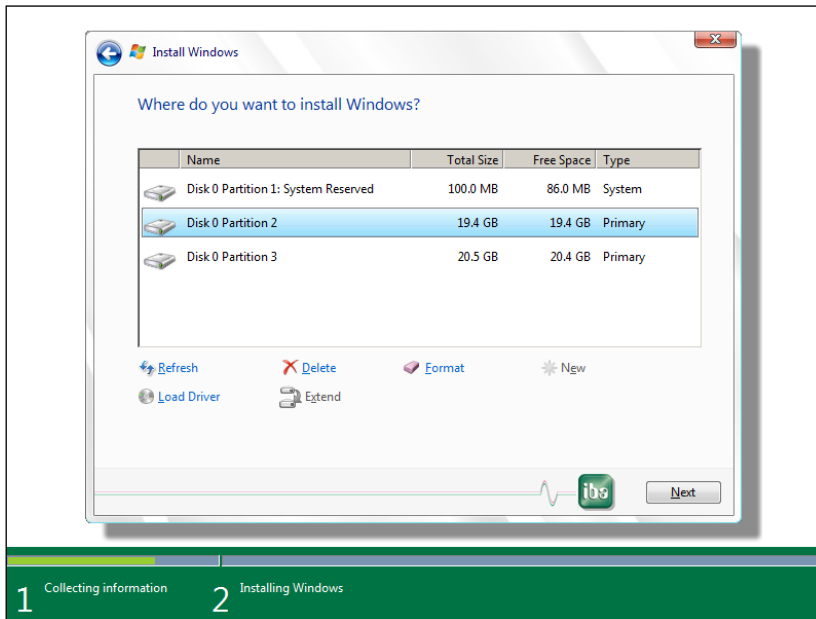
Possibility 4: Recovery Windows Server 2008



The drive is already in use and you want to install the operating system.

1. Click <Drive Options (advanced)>
2. Mark the primary partition (normally the smaller one)
3. Click <Format>
4. Confirm with <OK>
5. Click <Next> and continue with chapter 9.2.5 „Completing installation“.

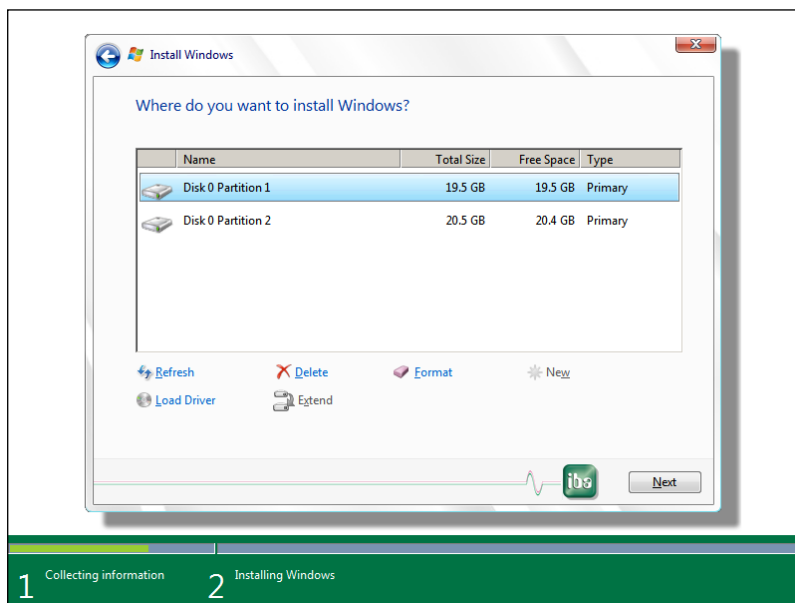
Possibility 5: Substitute Windows Embedded Standard 7 with Windows 2008



The drive is already in use and you want to replace the operating system.

1. Click <Drive Options (advanced)>
2. Mark the system partition
3. Click <Delete>
4. Confirm with <OK>
5. Mark the primary partition (normally the smaller one)
6. Click <Delete>
7. Confirm with <OK>
8. Mark the unpartitioned space
9. Click <Next> and continue with chapter 9.2.5 „Completing installation“.

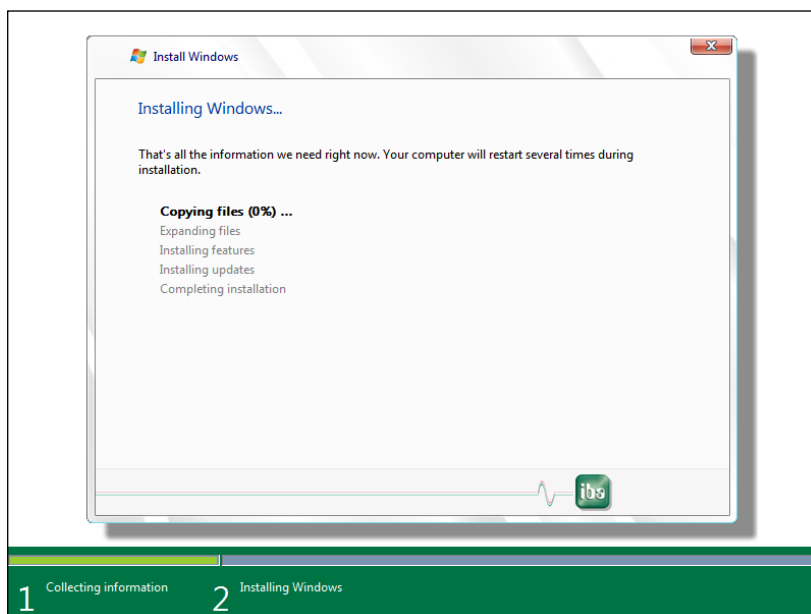
Possibility 6: Substitute Windows 2008 with Windows Embedded Standard 7



The drive is already in use and you want to replace the operating system.

1. Click <Drive Options (advanced)>
2. Mark the primary partition (normally the smaller one)
3. Click <Delete>
4. Confirm with <OK>
5. Mark the unpartitioned space
6. Click <Next> and continue with chapter 9.2.5 „Completing installation“.

9.2.5 Completing installation



The system files are copied to the drive and additional software is installed. The computer will restart twice. The procedure takes 30-40 min. depending on the hardware.

9.3 Windows Updates

The automated search for updates is deactivated in iba systems by default. Please adjust the settings according to the update policies in your company. Consult your IT department if necessary.

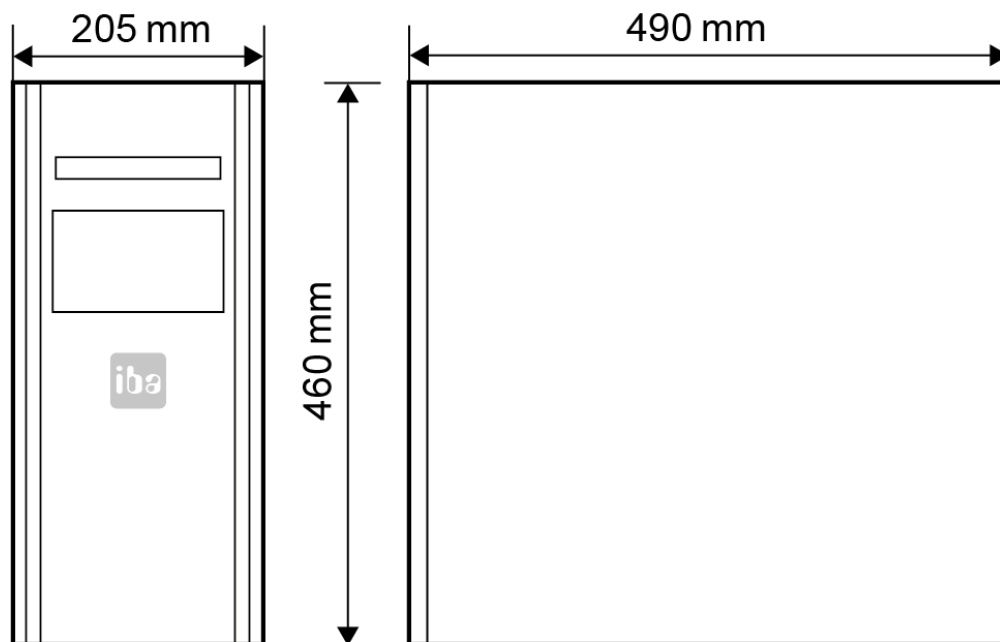
9.4 Antivirus Software

There is no antivirus software installed on iba systems in delivery state. Please install the antivirus software package which is used in your company by default. Consult your IT department if necessary.

9.5 Installing iba software

The installation of iba software is described in the manuals included in delivery.

10 Device dimensions



(dimensions in mm)

11 Technical data

11.1 Main data

Manufacturer	iba AG, Germany
Working temperature range	32 °F to 131 °F (0 °C to 55 °C)
Storage temperature range	-13 °F to 158 °F (-25 °C to 70 °C)
Transport temperature range	-13 °F to 158 °F (-25 °C to 70 °C)
Cooling	Fan cooling
Fan current	40 mA to 400 mA
Assembly	Tower, table device
Humidity class	F, no condensation
Protection class	IP20
Power supply	
ibaDeskline SAS standard	90 V to 264 V AC 110 V to 374 V DC 8 A/4 A 47 Hz to 63 Hz
Power output ibaDeskline SAS standard	Max. 400 W
ibaDeskline SAS RAID	100 V to 240 V AC; 8 A/4 A 47 Hz to 63 Hz
Power output ibaDeskline SAS RAID	1 x redundant 500 W
Mechanical data	
Dimensions (Height x Width x Depth)	18.1 in x 8.1 in x 19.3 in (460 mm x 205 mm x 490 mm)
Weight (incl. packaging and documentation)	
Standard system	Approx. 35.3 lb (16 kg)
RAID 1 system	Approx. 41.9 lb (19 kg)
RAID 6 system	Approx. 44.1 lb (20 kg)

11.2 Electronic components and interfaces

	ibaDeskline SAS	ibaDeskline SAS PCI
Processor	Xeon E3	Core 2 Quad Q9400
Motherboard	Supermicro X10SAT	Supermicro C2SBC-Q
Graphics on board	Intel P4600/P4700	Intel GMA 3100
Ethernet on board	2x 10 Mbps/100 Mbps/1000 Mbps	2x 10 Mbps/100 Mbps/1000 Mbps
HD audio on board	7.1 channel HD	5.1 channel HD
Working memory	8 GB DDR3-RAM	8 GB DDR2-RAM
Slots	PCI Express x16 for SAS-RAID controller 5x PCI Express for iba measuring cards	PCI Express x16 for SAS-RAID controller PCI Express 4x for special graphics card optionally 5x PCI for iba measuring cards
USB 2.0	2 x backside, 2 x topside, 1 x inside (dongle)	6 x backside, 4 x topside, 1 x inside (dongle)
USB 3.0	4 x backside, 2 x topside	-
LAN	2 x backside	2 x backside
VGA	1 x backside	1 x backside
HDMI/DVI/Thunderbolt	1 x backside	-
Serial (RS232C)	-	1 x backside
Hard disk	1 x 300 GB SAS HDD	1 x 300 GB SAS HDD
DVD writer	Internal S-ATA	Internal S-ATA

11.3 Products

PC systems	Order number
ibaDeskline SAS, Xeon E3, Win7 64 Bit, PCIe (1 hard disk, can be upgraded with up to 7 hard disks)	40.002004
ibaDeskline SAS PCI, Core2Quad 9400, Win7 64 Bit, PCI (1 hard disk, can be upgraded with up to 7 hard disks)	40.002012
On request:	
ibaDeskline SAS, XEON E3, Win7 64Bit, PCIe, SSD	40.002014
ibaDeskline SAS, XEON E3, Win10, PCIe, SSD	40.002015
Enhancement options	
Upgrade kit to RAID 1 system (1 controller, 1 hard disk, 1 redundant power supply unit)	43.000370
Upgrade kit to RAID 6 system (1 controller, 7 hard disks, 1 redundant power supply unit)	43.000371
HD 300 GB to 600 GB Upgrade SAS	43.000375
HD 300 GB to 900 GB Upgrade SAS	43.000376
On request:	
Hard disk SSD SAS 480GB ENTERPRISE	43.000348
Upgrade to RAID1 system, for SSD-PC	43.000374
Accessories	
Special graphic card with DVI/VGA adapter cable	43.900511
HD 145GB SAS	43.000324
HD 300GB SAS	43.000325
HD 600GB SAS	43.000326
HD 900GB SAS	43.000327
ATX Power supply	43.000571
Redundancy Power Supply	43.000581
Memory DDR2 1 x 2048	43.000307
Memory DDR3 1 x 4096	43.000308
ibaOut-Temp	11.110001
ibaOut-State	11.110002

12 Support and contact

Support

Phone: +49 911 97282-14
Fax: +49 911 97282-33
E-Mail: support@iba-ag.com



Note

If you require support, specify the serial number (iba-S/N) of the product.

Contact

Headquarters

iba AG

Postbox 1828
DE-90708 Fürth
Germany

Phone.: +49 911 97282-0
Fax: +49 911 97282-33
E-mail: iba@iba-ag.com
Contact: Harald Opel

Shipping address

iba AG
Gebhardtstr. 10
DE-90762 Fürth
Germany

Regional and Worldwide

For contact data of your regional iba office or representative please refer to our web site
www.iba-ag.com.