

## ibaPDA-PLC-Xplorer

### Interfaces to various PLC systems

Ideally suited for system suppliers, service technicians and control programmers

### Fields of application

- › Troubleshooting
- › Locating sporadic errors
- › Commissioning support
- › Mobile use

# Measuring from the beginning

ibaPDA-PLC-Xplorer offers the full ibaPDA functionality with access to different PLCs. Without additional hardware, this is an inexpensive way of measuring, displaying and recording signals.



ibaPDA-PLC-Xplorer is the ideal entry-level solution as PC-based acquisition and recording system for various measuring data in automated processes.

ibaPDA-PLC-Xplorer enables the acquisition and recording of up to 64 signals and offers data interfaces to SIMATIC S7 systems as well as CODESYS-based systems, Allen-Bradley, ABB, B&R, Bachmann, Beckhoff, Mitsubishi and SIGMATEK systems. Hence, it is possible to read internal data from the most common PLCs without modifying the PLC itself.

ibaPDA-PLC-Xplorer offers an economical solution for troubleshooting and commissioning and is suitable for long-term analysis and process optimization as well.

## Access without additional hardware or programming

The inexpensive software solution ibaPDA-PLC-Xplorer provides the complete functionality of ibaPDA and is able to record 64 signals from up to 16 independent PLCs per PLC-Xplorer interface. The PLC system can be accessed via standard interfaces – usually via Ethernet – without additional hardware. It is not necessary to modify the PLC configuration nor to program the PLC.

## Free operand/symbol selection

The variable list of the PLC can easily be imported in ibaPDA-PLC-Xplorer. All I/O signals and other operands from the PLC programs can be measured.

Most of the ibaPDA-PLC-Xplorer interfaces support a convenient selection of signals based on their symbolic names via address book. Address books are generated in ibaPDA-PLC-Xplorer and contain the available symbols. Depending on the system the address book is generated from the configuration data or loaded directly from the PLC. The signals can easily be selected by mouse click in the integrated symbol browser.

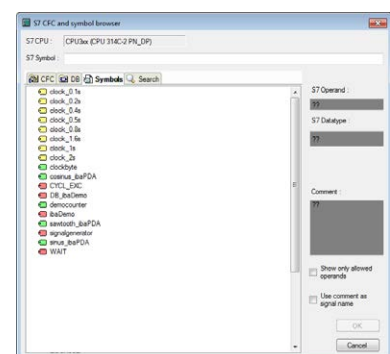
If necessary, the selected signals may flexibly be changed without modifying the PLC program. This flexibility offers many advantages especially for mobile service support.

## Variable recording profiles

As known in ibaPDA, various recording profiles can be defined for different applications. Continuous data recording of measurement files in iba format (\*.dat) is necessary for long-term analyses or process optimizations, and triggered recordings are useful when errors have to be located. Trigger conditions can be defined time or event related.

## At a glance

- ▶ Measuring signals directly from a PLC
- ▶ Including interfaces for various PLCs
- ▶ Can be used without additional hardware and without intervention in the PLC
- ▶ Comfortable selection of operands with a symbol browser
- ▶ Up to 64 signals, including full ibaPDA functionality
- ▶ Signals to be measured may be modified or enhanced without programming or restarting the PLC system
- ▶ Including analysis with ibaAnalyzer
- ▶ Data acquisition and analysis simultaneously or independent



Convenient operand selection using a symbol browser

## ibaPDA-PLC-Xplorer interfaces

### S7-Xplorer

SIMATIC S7 systems (LOGO!<sup>®</sup>, S7-200<sup>®</sup>, S7-300<sup>®</sup>, S7-400<sup>®</sup>, S7-400H<sup>®</sup>, S7-1200<sup>®</sup>, S7-1500<sup>®</sup>), WinAC (WinLC RTX), PLCSIM

### AB-Xplorer

Allen Bradley controllers PLC-5 and SLC500, MicroLogix

### ABB-Xplorer

AC 800M, AC 800PEC controllers

### B&R-Xplorer

B&R controllers<sup>1</sup>

### Bachmann-Xplorer

Bachmann M1 controllers

### CODESYS-Xplorer

CODESYS-V2- and CODESYS-V3-based PLC systems

### MELSEC-Xplorer

Mitsubishi MELSEC controllers

### Logix-Xplorer

Allen-Bradley controllers ControlLogix, GuardLogix, CompactLogix, SoftLogix or FlexLogix

### SIGMATEK-Xplorer

SIGMATEK controllers

### TwinCAT-Xplorer

Beckhoff-TwinCAT V2- and V3-controllers

## Possible extensions ( subject to a fee)

### Connection of drives and CNC controllers

- › SINAMICS-Xplorer
  - › SIMOTION-Xplorer
  - › SINUMERIK-Xplorer
- } also available as bundle Drive-Xplorer

### Connection of cameras

- › ibaCapture
- › Camera licenses on demand

### Online display

Due to the client server architecture it is possible to online display the timing of all signals on one client. For example PLC programmer or service technicians can have their own view on regions of their specific interest - and of course as mobile user with a laptop. Besides the realtime trend graph, ibaPDA-PLC-Xplorer offers all views known from ibaPDA like oscilloscope, FFT, or digital meter.

### Automated analysis saves time

Once the evaluation criteria have been defined, analyzing can automatically be done in order to save valuable time. It is possible to configure ibaPDA-PLC-Xplorer so that the analysis of the last file starts automatically. The applications ibaDatCoordinator and ibaAnalyzer-Reportgenerator provide additional support.

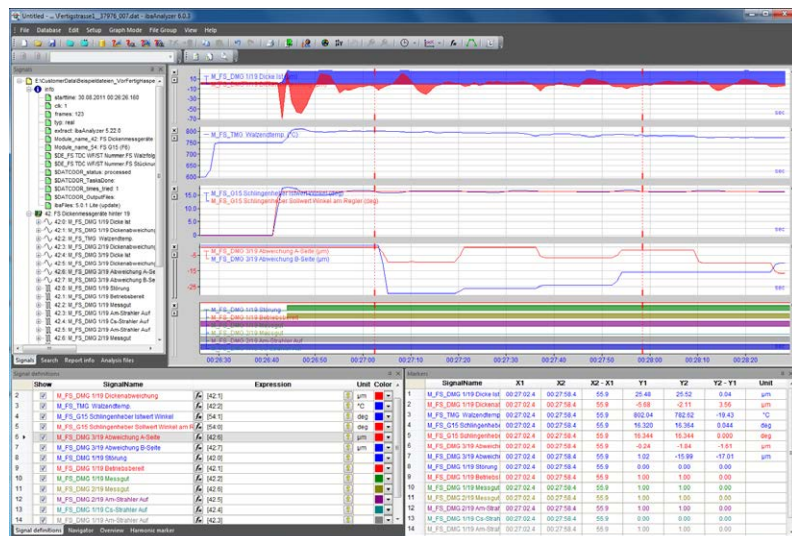
ibaDatCoordinator is a tool for individual data management, e. g. the measurement files can be copied from the acquisition systems to central servers being available for all authorized users.

### Reports at the push of a button

Using ibaAnalyzer-Reportgenerator, reports can automatically be generated in various formats and

### Free analysis included

Measurement files generated by ibaPDA-PLC-Xplorer can be analyzed using the ibaAnalyzer<sup>2</sup> standard tool which is available free of charge. Since data acquisition and analysis are done separately, the files can be analyzed during recording or at a later point in time, e. g. by experts outside the plant. Since ibaAnalyzer can be used on several computers, several users may individually analyze the data according to their needs. Data can centrally be stored on a server or sent by email.



ibaAnalyzer provides detailed display functions and broad options for analyzing and evaluating.

<sup>1</sup> Prerequisite: Installation and licensing of the B&R PVI-Manager, not included in the PLC-Xplorer license

<sup>2</sup> ibaAnalyzer with free license when purchasing ibaPDA-PLC-Xplorer

individual layouts. Individual job reports, shift reports or product reports for production, quality management or controlling can be created in different formats virtually at the push of a button.

### Connecting data bases

When the data shall be processed in a database, measuring data can be loaded into a database with ibaAnalyzer-DB. It is also possible to analyze data from a database with this application. The main database formats are supported, like Microsoft SQL-Server, Oracle, IBM DB2-UDB, MySQL, PostgreSQL, Microsoft Access.

### Video surveillance with ibaCapture

When launching the latest version of ibaCapture, it is possible to connect ibaPDA-PLC-Xplorer with an ibaCapture Server. Thus, measuring data and video data can be recorded synchronously. An ibaCapture Server license, available in graduated steps depending

on the frame rate, and separate camera licenses are needed for video recording. Connecting one camera is an inexpensive entry-level solution to record videos along with measuring data.

### Licenses and extensions

The software ibaPDA-PLC-Xplorer includes the interfaces S7-Xplorer, AB-Xplorer, ABB-Xplorer, B&R-Xplorer, Bachmann-Xplorer, Codesys-Xplorer, Logix-Xplorer, MELSEC-Xplorer, Sigmatek-Xplorer and TwinCAT-Xplorer, and is designed to record 64 analog or digital signals in total.

If 64 signals are not sufficient or other extensions are required in ibaPDA, the system can be upgraded to a complete ibaPDA system. All Xplorer interfaces are also available separately for an existing ibaPDA system. It is possible to use ibaCapture, ibaHD-Server, ibaDaVIS or ibaAnalyzer-DB together with ibaPDA-PLC-Xplorer without upgrading to the full ibaPDA version.

### Training program

The iba training program offers a course „Measurement and data evaluation with the iba system“. During this 2-day training you learn the two-step method for signal configuration, triggering and recording with ibaPDA as well as offline analysis with ibaAnalyzer.

In addition the training gives an overview of the automatic report generation using ibaDatCoordinator and ibaAnalyzer-Reportgenerator.

You find more information regarding the iba training under [www.iba-ag.com/training](http://www.iba-ag.com/training).

### System requirements

- ▶ Windows 7 (32/64 Bit), 8 (32/64 Bit), 8.1 (32/64 Bit), 10 (32/64 Bit), Windows Server 2008 (32 Bit), 2008 R2 (64 Bit), 2012 (64 Bit), 2012 R2 (64 Bit), 2016 (64 Bit), 2019 (64 Bit)
- ▶ PC, Multicore CPU 2 GHz, 4 GB RAM, 100 GB HDD

Order no.	Name	Description
30.681502	ibaPDA-V7-PLC-Xplorer	ibaPDA system for 64 signals, 2 clients, 2 data recordings, standard interfaces plus + S7-Xplorer, AB-Xplorer, ABB-Xplorer, B&R-Xplorer, Bachmann-Xplorer, Codesys-Xplorer, Logix-Xplorer, MELSEC-Xplorer, Sigmatek-Xplorer, TwinCAT-Xplorer
30.001900	Upgrade-ibaPDA-PLC-Xplorer-Interfaces	Upgrade of an existing license ibaPDA-PLC-Xplorer with the latest Xplorer interfaces
30.770009	Upgrade-PLC-Xplorer to PDA-V7-64	Upgrade to ibaPDA-V7 with 64 signals and PLC-Xplorer interface
31.001042	ibaPDA-Interface-PLC-Xplorer	Extension license for an ibaPDA system with PLC-Xplorer interfaces
31.000030	ibaPDA-Interface-SINAMICS-Xplorer <sup>1</sup>	Xplorer interface for SINAMICS drives
31.000031	ibaPDA-Interface-SIMOTION-Xplorer <sup>1</sup>	Xplorer interface for SIMOTION systems
31.000033	ibaPDA-Interface-SINUMERIK-Xplorer <sup>1</sup>	Xplorer interface for SINUMERIK CNC controls
31.001044	ibaPDA-Interface-Drive-Xplorer <sup>1</sup>	Bundle of SINAMICS and SIMOTION-Xplorer interfaces
61.000200	Measurement and data evaluation with the iba system	2-day training

<sup>1</sup> The interfaces are not included in the ibaPDA-PLC-Xplorer license, but can be licensed additionally.

### iba AG

#### Postal address

Koenigswarterstr. 44  
90762 Fuerth

#### Mail address

P.O. box 1828  
D-90708 Fuerth

Phone: +49 (911) 97282-0 [www.iba-ag.com](http://www.iba-ag.com)

Fax: +49 (911) 97282-33 [iba@iba-ag.com](mailto:iba@iba-ag.com)

iba AG is represented worldwide by subsidiaries and sales partners. Technical changes and errors excepted.